

# HORIZONTAL CABLE MANAGEMENT, SHELVES & ACCESSORIES

## Cable Management Panels

NOTE: Product dimensions are listed by width, height and depth unless specified otherwise.

OR-60400129



OR-808044916



OR-60400426



OR-808044915



**Feed-Through Cable Management Panels**

Ortronics feed-through cable management panels provide organized management of patch cables horizontally, vertically, and from front to back on 19" EIA distribution racks. Color is black.

PART NO.	DESCRIPTION
OR-60400129	Five horizontal distribution rings, 1.7"H x 3.5"D, four 1" x 2" cutouts, 1 rack units
OR-808044916	Five horizontal distribution rings, 3"H x 2"D, four 1.5" x 2" cutouts, 2 rack units
OR-60400426	Five horizontal distribution rings, 3"H x 4"D, four 2.75" x 2.75" cutouts, 2 rack units
OR-808044915	Four horizontal, distribution rings, 2"H x 4"D, 24 routing clips, .10"W x 2.63"D, three 1.5" x 2" cutouts, 2 rack units

NOTE: Includes #12-24 mounting hardware.

# HORIZONTAL CABLE MANAGEMENT, SHELVES & ACCESSORIES

## Cable Management Panels

NOTE: Product dimensions are listed by width, height and depth unless specified otherwise.

OR-60400189



OR-60400099



OR-60400114



OR-60400098



OR-60400054



### Bend Limiting Cable Management Panels

Ortronics® bend limiting cable management panels have curved falls that protect against cable crimping and also maintain proper bend radius. The panels are ideal at the top of standard 19" EIA racks. Black.

PART NO.	DESCRIPTION
OR-60400189	1.7"H x 3.5"D rings with waterfall, 1 rack unit
OR-60400099	3.5"H x 3.5"D rings with waterfall, 2 rack units
OR-60400114	3.5"H x 6"D rings with waterfall, 2 rack units
OR-60400098	7"H x 4.5"D rings with waterfall, 4 rack units
OR-60400054	7"H x 7"D rings with waterfall, 4 rack units

NOTE: Includes #12-24 mounting hardware.

OR-808000010



OR-808044508



OR-808044549



OR-808045030



### Finger Duct Cable Management Panels

Ortronics closed cover finger duct cable management panels provide organized movement for horizontal and vertical routing of patch cables on 19" EIA distribution racks. Black.

PART NO.	DESCRIPTION
OR-808000010	1.5"H x 1.5"D duct, 1 rack unit
OR-808044508	3"H x 1.5"D duct, 2 rack units
OR-808044549	3"H x 3"D duct, 2 rack units
OR-808045030	Front and rear ducts, 3"H x 3"D front duct, 2"H x 4"D rear duct, 2 rack units

NOTE: Includes #12-24 mounting hardware.

# HORIZONTAL CABLE MANAGEMENT, SHELVES & ACCESSORIES

## Cable Management Panels

NOTE: Product dimensions are listed by width, height and depth unless specified otherwise.

OR-FCM-19-1XL



OR-FCM-19-2XL



OR-FCM-19-2XLH\*



OR-FCM-19-4XL



### Interbay Organizers

Ideal for bulk routing patch cords between bays and within bays to eliminate congestion, interbay organizers are larger in capacity than patch cord organizers. Express routes make it easy to trace and maintain circuits.

#### Features:

FCM-19-1XL, FCM-19-2XL and FCM-19-2XLH should be mounted at the top, center or bottom of equipment racks. FCM-19-2XLH features feed-through holes to accommodate front-to-back jumpering

- The larger-capacity FCM-19-4XL is mounted at the top or bottom of a rack
- Rounded ring edges protect cables
- Constructed of 16-gauge steel
- Welded cable rings also constructed of steel for maximum support

PART NO.	DESCRIPTION
OR-FCM-19-1XL	Inside ring: 1.50"H x 3.50"D, dimensions: 1.75"H x 20.19"W x 4.75"D, cable capacity: 63, 3 lbs
OR-FCM-19-2XL	Inside ring: 3.00"H x 3.50"D, dimensions: 3.50"H x 20.19"W x 4.94"D, cable capacity: 126, 4 lbs
OR-FCM-19-2XLH*	Inside ring: 3.00"H x 3.50"D, dimensions: 3.50"H x 20.19"W x 4.94"D, cable capacity: 126, 4 lbs
OR-FCM-19-4XL	Inside ring: 6.50"H x 3.50"D, dimensions: 7.00"H x 20.19"W x 4.00"D, cable capacity: 273, 7 lbs

Black finish. \*H = feed-through holes.

Cable capacity based on .215 cable diameter.

# HORIZONTAL CABLE MANAGEMENT, SHELVES & ACCESSORIES

## Cable Management Panels

NOTE: Product dimensions are listed by width, height and depth unless specified otherwise.

OR-FCM-19-1



OR-FCM-19-1SR



OR-FCM-19-1SRC



OR-FCM-19-2



OR-FCM-19-2SR



OR-FCM-19-2SRC\*



OR-FCM-19-2L



### Patch Cord Organizers

Patch cord organizers create horizontal and vertical pathways for frontside cable management. Designed for use with patch panels, the organizers simplify the tracing, identifying and rerouting of patch cords.

#### Features:

- FCMs with side rings help manage wall rack installations
- Use rack adapters when mounting organizers to 23" racks
- Made of 16-gauge steel
- 1SR and 1SRC made of 18-gauge steel

PART NO.	DESCRIPTION
OR-FCM-19-1	Inside ring dimensions: vertical 1.75"W x 3.75"D, rack spaces (1.75"): 1
OR-FCM-19-1SR	Inside ring dimensions: vertical 1.75"W x 1.75"D, horizontal 1.00"H x 1.75"D, rack spaces (1.75"): 1
OR-FCM-19-1SRC*	Inside ring dimensions: horizontal 1.00"H x 1.75"D, rack spaces (1.75"): 1
OR-FCM-19-2	Inside ring dimensions: vertical 1.75"W x 3.75"D, horizontal 1.75"H x 1.75"D, rack spaces (1.75"): 2
OR-FCM-19-2SR	Inside ring dimensions: vertical 1.75"W x 1.75"D, horizontal 1.75"H x 1.75"D, rack spaces (1.75"): 2
OR-FCM-19-2SRC*	Inside ring dimensions: horizontal 1.75"H x 1.75"D, rack spaces (1.75"): 2
OR-FCM-19-2L	Inside ring dimensions: vertical 1.75"W x 3.75"D, horizontal 1.75"H x 3.75"D, rack spaces (1.75"): 2

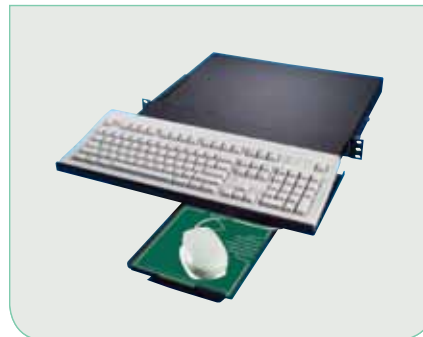
Black finish. \* Recommended for use with vertical organizers (page 109). Can also be used in cabinet installations.

## HORIZONTAL CABLE MANAGEMENT, SHELVES & ACCESSORIES : Equipment Shelves

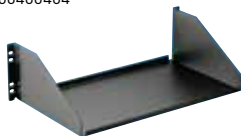
NOTE: Product dimensions are listed by width, height and depth unless specified otherwise.

Legrand | Ortronics offers a full range of sturdy equipment shelves to support valuable equipment. From vented equipment shelves to the folding keyboard shelf, there is a shelf to fit every need.

NOTE: #12-24 mounting hardware included with all shelves.



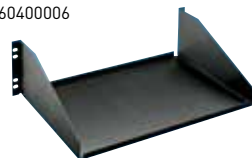
OR-60400404



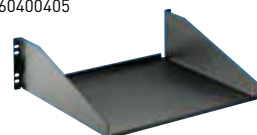
### Equipment Shelves

Ortronics® equipment shelf supports miscellaneous equipment or test gear. Can be mounted on standard 19" EIA racks. Inside shelf width is 17". Black.

OR-60400006

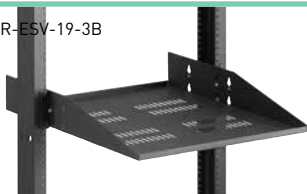


OR-60400405



PART NO.	DESCRIPTION
OR-60400404	19" x 5.25" x 10.13", 75 lbs capacity
OR-60400006	19" x 5.25" x 12.13", 75 lbs capacity
OR-60400405	19" x 5.25" x 15.13", 75 lbs capacity

OR-ESV-19-3B



### Equipment Shelves

#### Features:

- Mounts to 19" or 23" equipment racks
- Heavy-duty 16-gauge steel accommodates heavy equipment
- Depth variety matches installation needs
- Patented shelf can be mounted upside down
- Vented to allow air flow beneath mounted equipment
- Mounting hardware included

OR-ESV-19-3B



Solid Version	
PART NO.	DESCRIPTION
OR-ES-19-3B	3.50"H x 17.38"W x 15.50"D, rack spaces: 2, load rating: 150 lbs
OR-ES-19-4B	3.50"H x 17.38"W x 21.75"D, rack spaces: 2, load rating: 150 lbs
OR-ES-23-3B	3.50"H x 21.38"W x 15.50"D, rack spaces: 2, load rating: 150 lbs
OR-ES-23-4B	3.50"H x 21.38"W x 21.75"D, rack spaces: 2, load rating: 150 lbs

Vented Version	
PART NO.	DESCRIPTION
OR-ESV-19-3B	3.50"H x 17.38"W x 15.50"D, rack spaces: 2, load rating: 150 lbs
OR-ESV-19-4B	3.50"H x 17.38"W x 21.75"D, rack spaces: 2, load rating: 150 lbs
OR-ESV-23-3B	3.50"H x 21.38"W x 15.50"D, rack spaces: 2, load rating: 150 lbs
OR-ESV-23-4B	3.50"H x 21.38"W x 21.75"D, rack spaces: 2, load rating: 150 lbs

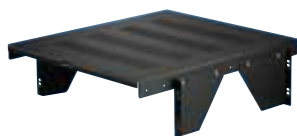
Black finish.

# HORIZONTAL CABLE MANAGEMENT, SHELVES & ACCESSORIES

## Equipment Shelves

NOTE: Product dimensions are listed by width, height and depth unless specified otherwise.

OR-604045388



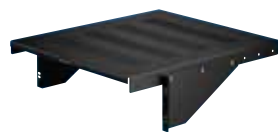
### 4 Point Vented Equipment Shelf

This four-point vented shelf can be used with the Mighty Mo® racks in all three channel depths. Shelf width is 17.5". Black.

### Vented Equipment Shelf for Mighty Mo Racks

PART NO.	DESCRIPTION
OR-604045388	19" x 5.75" x 20", 150 lbs capacity

OR-604045075



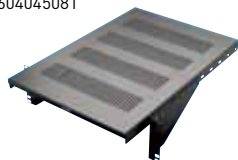
### Vented Equipment Shelves

Ortronics® vented equipment shelves keep active equipment cool. Can be mounted on standard 19" EIA racks. Shelf width is 17.5". Black.

### Cantilevered Vented Equipment Shelves

PART NO.	DESCRIPTION
OR-604045075	19" x 5.75" x 20", 85 lbs capacity
OR-604045081	19" x 5.75" x 24", 85 lbs capacity

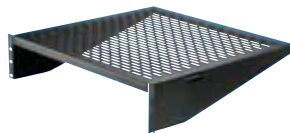
OR-604045081



### Standard Vented Equipment Shelf

PART NO.	DESCRIPTION
OR-604045401	19" x 4" x 16", 50 lbs capacity

OR-604045401



### Vented Equipment Shelf, Fixed

PART NO.	DESCRIPTION
OR-604044486	19" x 4" x 18", 35 lbs capacity

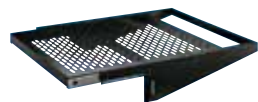
OR-604044486



### Vented Equipment Shelf, Slide-out

PART NO.	DESCRIPTION
OR-604044938	19" x 4" x 18", 35 lbs capacity

OR-604044938



# HORIZONTAL CABLE MANAGEMENT, SHELVES & ACCESSORIES

## Equipment Shelves

NOTE: Product dimensions are listed by width, height and depth unless specified otherwise.

ESV-19-FMB



### Front-Mount Equipment Shelf

#### Features:

- Cantilever shelf mounts in several positions
- 1/2" deep tray can be inverted to create a flat surface for deep equipment
- Mounts to 3" or 6" channel
- Choose between standard or vented version
- Mounting hardware included
- Made of 16-gauge steel

#### Solid Version

PART NO.	DESCRIPTION
OR-ES-19-FMB	5.25"H x 17.25"W x 14.00"D, rack spaces: 3, load rating: 50 lbs
OR-ES-23-FMB	5.25"H x 21.25"W x 14.00"D, rack spaces: 3, load rating: 50 lbs

#### Vented Version

PART NO.	DESCRIPTION
OR-ESV-19-FMB	5.25"H x 17.25"W x 14.00"D, rack spaces: 3, load rating: 50 lbs
OR-ESV-23-FMB	5.25"H x 21.25"W x 14.00"D, rack spaces: 3, load rating: 50 lbs

Black finish.

ES-19-MCSB



### Multi-Configuration Equipment Shelf

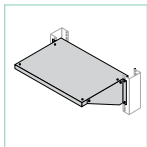
#### Features:

- Mounts in at least 14 different ways
- Mounts on 3" or 6" channel equipment racks
- Brackets invert to meet mounting space requirements
- Shelf can be inverted to create a 3/4" deep tray
- Mount two units back-to-back to form a double-sided shelf
- Mounting hardware included
- Made of 16-gauge steel

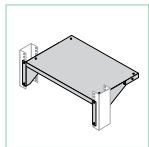
PART NO.	DESCRIPTION
OR-ES-19-MCSB	5.25"H x 17.50"W x 12.00"D, rack spaces: 3, load rating: 50 lbs

Black finish.

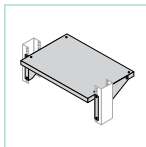
## Multi-Configuration Equipment Shelf Mounting Options



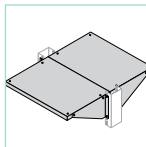
Shelf back to rack center



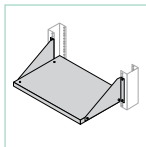
Shelf front flush to rack front



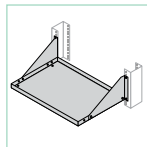
Shelf front 1-1/2" beyond rack front



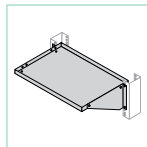
Two units form a 24" Double-sided shelf



Brackets can be inverted to meet mounting space requirements

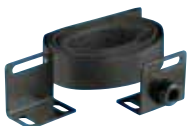


Brackets can be inverted to meet mounting space requirements



Shelf can be inverted to make a 3/4" Deep tray

OR-60400523



### Computer Tie Down Kit

Ortronics® CPU tie down kit includes mounting plates with rubber bumpers which can be quickly attached to the EIA pattern on the front and rear of any rack with a rail depth from 3" to 6.5". The hook and loop strap with elastic center safely holds the CPU in place against the rubber bumpers. The CPU can be easily removed for service. Black.

PART NO.	DESCRIPTION
OR-60400523	One hook and loop type strap, two brackets

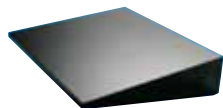
NOTE: Includes #12-24 mounting hardware.  
Patent No. 6,598,270

# HORIZONTAL CABLE MANAGEMENT, SHELVES & ACCESSORIES

## Equipment Shelves

NOTE: Product dimensions are listed by width, height and depth unless specified otherwise.

OR-604044927



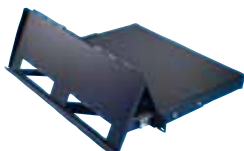
### Wall Mount Shelf

Ortronics® wall mount shelf is designed for smaller systems applications, or where space is limited and a free standing rack cannot be used. Black.

PART NO.	DESCRIPTION
OR-604044927	20" x 4.875" x 18", 120 lbs capacity

NOTE: Shelf has six keyholes in the rear for mounting. Mounting hardware not included

OR-60400550



### Folding Keyboard Shelf

This shelf has a keyboard tray which folds up and locks in place. The tray holds all full standard keyboards up to 19" Wide. Black.

PART NO.	DESCRIPTION
OR-60400550	19" rack mount, 1 rack unit
OR-60400551	23" rack mount, 1 rack unit

OR-60400606

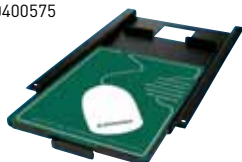


### Rear Support Brackets

Rear support brackets allow the folding keyboard shelf to support any standard computer monitor up to 35 lbs. The brackets adjust from 6.25" to 17". Black.

PART NO.	DESCRIPTION
OR-60400606	For folding keyboard shelf

OR-60400575



### Mouse Tray with Pad

The mouse tray slides underneath the keyboard tray when not in use. Black.

PART NO.	DESCRIPTION
OR-60400575	For folding keyboard shelf

NOTE: Mounting hardware included

OR-KTR19-DR



### Keyboard Tray

#### Features:

- Fits all standard keyboards and mounts to 19" equipment racks
- Mouse pad tray slides beneath the keyboard tray when not in use
- Mounting hardware is included
- Mouse pad can be mounted on left or right side
- Constructed of 16-gauge steel

PART NO.	DESCRIPTION
OR-KTR19-DR	4.47"H x 20.38"W x 12.00"D, load rating: 25 lbs

Black finish.

OR-KTF-19-DR



### Fold-Up Keyboard Tray

#### Features:

- Fits all standard keyboards and mounts to 19" equipment racks
- Mouse pad tray slides beneath the keyboard tray when not in use
- Keyboard tray folds upward against uprights when not in use
- Mounting hardware is included
- Mouse pad can be mounted on left or right side
- Constructed of 16-gauge steel

PART NO.	DESCRIPTION
OR-KTF-19-DR	3.50"H x 20.38"W x 7.13"D, load rating: 25 lbs

Black finish. Mouse pad tray adds 7.28" to the direction extended.